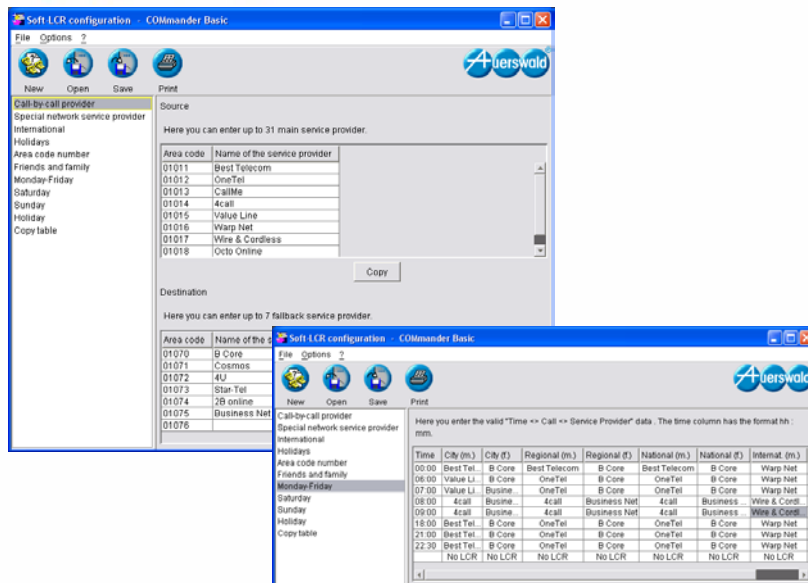


## Soft-LCR Version 3

*Additional Software for comfortable and flexible  
Least Cost Routing ' with AUERSWALD ISDN PABX Systems.*



**You are owner of an Auerswald ISDN PABX system? You always like to phone with the cheapest network provider? And with the greatest possible comfort?**

**If you are able to answer these three questions with „Yes“, you will need Soft LCR, the Least Cost Routing software for your PABX.**

### The Concept

The basis is a database containing the tariff structure of the different network providers. A table is automatically generated from these data. It assigns a certain provider - the cheapest – for each day of the week, each time of the day and each distance zone. From the entries of this table the PABX „knows“ which digits have to be used for the network access and it automatically dials them itself.

### The Preparations

First of all the local area code and the regional zone numbers have to be entered manually (lists are available in most countries in the internet). Then the requested providers are entered together with times and zones into the table. If these data are edited completely and the LCR table is transferred into the PABX, Soft-LCR is ready for operation. The PC is not necessary any longer. When configuring Soft-LCR you can separately set for each extension whether it should use the services of this program. The settings for exchange line authorization and restricted numbers remain untouched.

### The LCR Table

The LCR table contains the tariff hours and distance zones together with the corresponding provider for each day of the week. Thereby different types of days are differentiated:

Monday to Friday, Saturday, Sunday, holidays (date dependent holidays have already been preset, changing holidays, e. g. Eastern, may be entered manually).

### The Update of the Tariff Data

The tariff database can easily be kept up-to-date e.g. with current data from the Internet. Different vendors offer the most current Call-by-Call tariffs of the different providers on their daily updated pages.

### Which Function for which PABX System?

	COMpact 2206 USB / 4410 USB / 4406 DSL, COMmander Basic	COMpact 2104 / 2104 USB / 2104 DSL
Area codes city area	50	30
Area code regional area	120	100 (alternative special telephone numbers)
Tariff zone national	Yes	Yes
Differentiation of foreign countries	Yes (250 area codes)	Yes (more than 100)
Prefixes of mobile providers	See other network providers	4 (e. g. 0161, 0171, 0172, 0177)
Other network providers	8 (free selectable, e. g. mobile phones)	See mobile phones
Friends & Family	20 numbers	No
Types of weekdays	Mo-Fr, Sa, Su, holidays (15 maximum)	Mo-Fr, Sa, Su, holidays (15 maximum)
Copy function for LCR tables	Yes	Yes
Administrable providers	31	5
Administrable fallback providers	7	No

Please pay attention: Due to different environments the usable functionality of Soft-LCR may vary from country to country.

### The automatic Soft-LCR

The calling partner is called as usual by entering the telephone number or short-code dial number. But: Now **Soft-LCR** decides which provider will be used in the PABX by determining the distance zone, the time of the day and the weekday. The PABX gets the necessary information from the LCR table (automatic selection). If the selected provider was busy: No problem! For each area one of the seven alternative providers – the fallback provider – can be used. Then the PABX will dial the requested telephone number via this provider. If the fallback provider is also busy, the dialing will happen automatically without network provider code that means via preselection network provider.

The function “fallback provider” is exclusively supported by the COMmander Basic.

### The manual Soft-LCR

If the user wants to phone explicitly via a certain provider, Soft-LCR also offers a manual type of operation. To keep the operation simple, the network providers listed in the LCR table can be dialed with a special exchange line access sequence (call-by-call quick selection). Afterwards the subscriber's number is dialed.

### Least Cost Routing for Everyone

Soft-LCR is bundled free of charge with the Auerswald ISDN PABX systems (see table). Also already installed PABX systems can be upgraded to Soft-LCR free of charge. For this purpose the PABX software can be updated via the ISDN line and the configuration program is available in the Internet for download. Besides this Soft-LCR does not only work under Windows operating systems bus also under Linux and Mac OS 8/9.