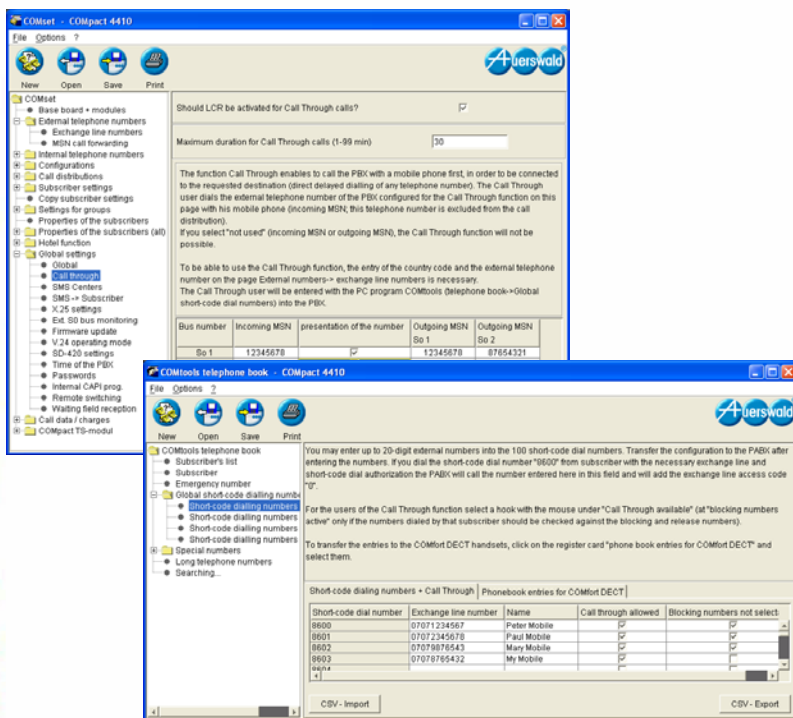




Call Through

Least Cost Routing for your Mobile Telephone with the ISDN PABX COMpact 2206 USB, COMpact 4410 USB, COMpact 4406 DSL and COMmander Basic.



The second step is made with the configuration software *COMtools* telephone book. Under the point "Global short-code dialing numbers" there are two more columns available since *COMtools* version 2.2.26. Here you can select which external subscriber may use the function Call Through. If the external subscriber has not yet been entered in the central telephone book of the PABX, it has to be entered there first. By checking the presented telephone numbers (e.g. 0160/1234567, 0172/1234567 etc.) the PABX enables the authorization. It will also be checked whether it is a „secure“ telephone number (screened number). In another column the Blocking numbers of the PABX (e.g. 0190, 118, etc.) can individually be activated for each authorized external subscriber.

Important: If the external subscriber does not present any telephone number or a wrong number (is not in the global short-code dialing memory of the PABX), the PABX will not accept the call. Then a Call Through connection will not be possible and an abuse by non-authorized external persons will be prohibited!

You are owner of the Auerswald PABX systems COMpact 2206 USB, COMpact 4410 USB, COMpact 4406 DSL or COMmander Basic and you have family members or employees with a mobile phone?

With the function Call Through you can call cheaper with the mobile phone via the PABX at home and even use Least Cost Routing at the same time – with ease-of-use. Thanks to this method cost savings of more than 80% are possible.

The Idea

A mobile telephone with a prepaid contract has the advantage that no monthly rate for the use has to be paid. The disadvantage is the very high price per minute into the fixed network, with the exception of a relatively cheap special telephone number (e.g. XtraOne, BestFriend etc.) and into the competing mobile phone networks. The idea behind „Call Through“ is really very simple. You do not call the destination subscriber directly with your mobile phone but use the indirect way through your own ISDN PABX. With this backdoor you can easily save more than 80% of the call charges!

In this calculation the mobile phone charges and the additional charges incurred by the ISDN connection at home have already been considered. This calculation also works with the standard or business tariffs. In the table on the back page you will find a sample calculation explaining how this feature could save money for you.

The Preparations

In the configuration program *COMset* (beginning with version 2.3.19) the first steps are found under the point „Global settings / Call Through“. First of all one or several exchange line number(s) per S_0 port are selected for the incoming Call Through call. One of these telephone numbers has to be called from the mobile phone to start the Call Through.

Then the S_0 port(s) (one or more) have to be selected that the PABX will use to call the destination number. At this time you can also configure if the telephone number of the PABX at home will be presented to the destination subscriber. You can also limit the maximum conversation time of the Call Through connection (1-60 minutes) and activate the Least Cost Routing (*Soft-LCR*) for the outgoing call to gain additional savings.

Call Through in daily Business

Configuration Example: As precondition for the function Call Through the telephone number 05306/654321 is selected for the incoming call in a *COMpact 4410 USB*. Outgoing the same telephone number will be presented to the destination subscriber. The number of the Prepaid mobile phone is 0160/1234567 and it is stored in the global short-code dialing memory of the PABX. The call number presentation is activated in the mobile phone.

Procedure: The mobile phone (0160/1234567) dials the telephone number 05306/654321 at home. The PABX recognizes the telephone number, accepts the call and signalizes a short special tone to the caller. Now the caller has 20 seconds to enter the digits of the destination number via DTMF (in-band dialing). The destination telephone number has always to be entered with the area code. Then the PABX dials the destination number even with the help of *Soft-LCR* if enabled. If the remote subscriber accepts the call, a connection is established from the mobile phone network through the PABX to the remote subscriber.

The short-code dial numbers of the PABX telephone book (e.g. *8600) or internal subscribers of the PABX (e.g. *31) can also be dialed as destination numbers.



Call Through

Least Cost Routing for your Mobile Telephone with the ISDN PABX COMpact 2206 USB, COMpact 4410 USB, COMpact 4406 DSL and COMmander Basic.

The Highlights

- Call Through is available for the PABX systems *COMpact 2206 USB / 4410 USB / 4406 DSL* and *COMmander Basic*
- The *COMpact 2206 USB / 4410 USB* and *4406 DSL* can establish one Call Through connection, the *COMmander Basic* can establish up to four Call Through connections depending on the expansion level
- Security against abuse by caller authorization check via presented telephone number (CLIP, screened number)
- **No** dialing of „secret“ programming codes is necessary
- In the global short-code dialing memory of the PABX up to 400 external subscribers can be authorized for the use of Call Through
- Entry of the destination number (DTMF / in-band signaling) by manual dialing and from the telephone book of the PABX
- Entry of the telephone number from the telephone book of the mobile phone is possible (DTMF / in-band signaling), country codes (e.g. 0049 or +49) are accepted
- Outgoing Call Through connections via internal Least Cost Routing (*Soft-LCR*) of the PABX are supported
- Recording of the Call Through connections in the call data management of the PABX

Sample calculation

Connection to (call of appr. 3 min. / during the day)	fixed network		mobile net	
	national call >50 km	international call (USA)	own provider	other provider
mobile without Call Trough	2,37 €	5,97 €	1,17 €	2,37 €
mobile to PABX	0,87 €	0,87 €		0,87 €
PABX to destination without LCR	0,27 €	0,37 €	no	0,74 €
	1,14 €	1,24 €	savings	1,61 €
Savings in percent	52%	79%	possible	32%
Saving in EURO	-1,23 €	-4,73 €		-0,76 €
mobile without Call Trough	2,37 €	5,97 €	1,17 €	2,37 €
mobile to PABX	0,87 €	0,87 €		0,87 €
PABX to destination with LCR	0,05 €	0,05 €	no	0,53 €
	0,92 €	0,92 €	savings	1,40 €
Savings in percent	61%	85%	possible	41%
Saving in EURO	-1,45 €	-5,05 €		-0,97 €

(This sample calculation is based upon German providers with tariffs of December 2003)